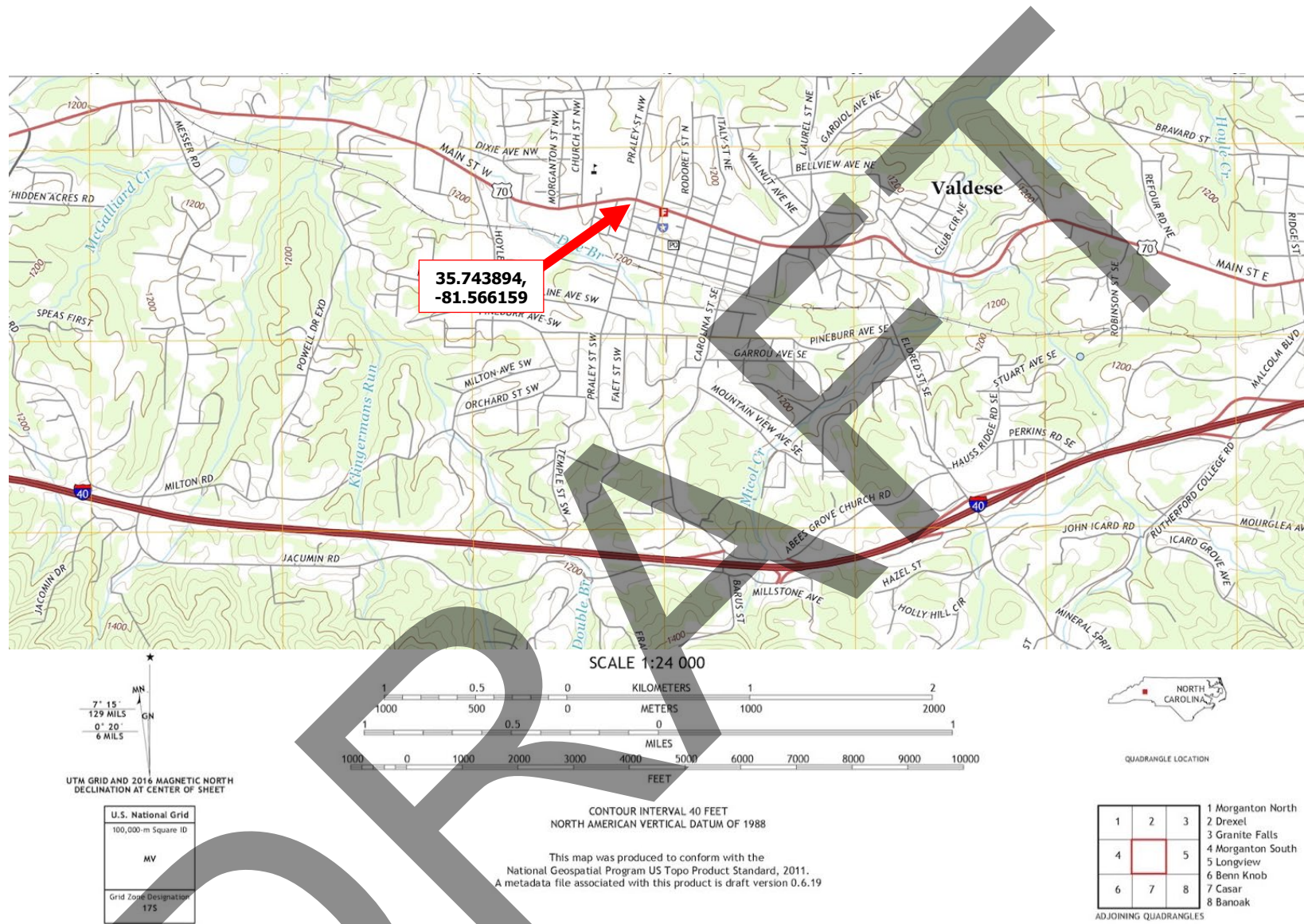




**NATIONAL REGISTER OF HISTORIC PLACES
LOCATION MAP**

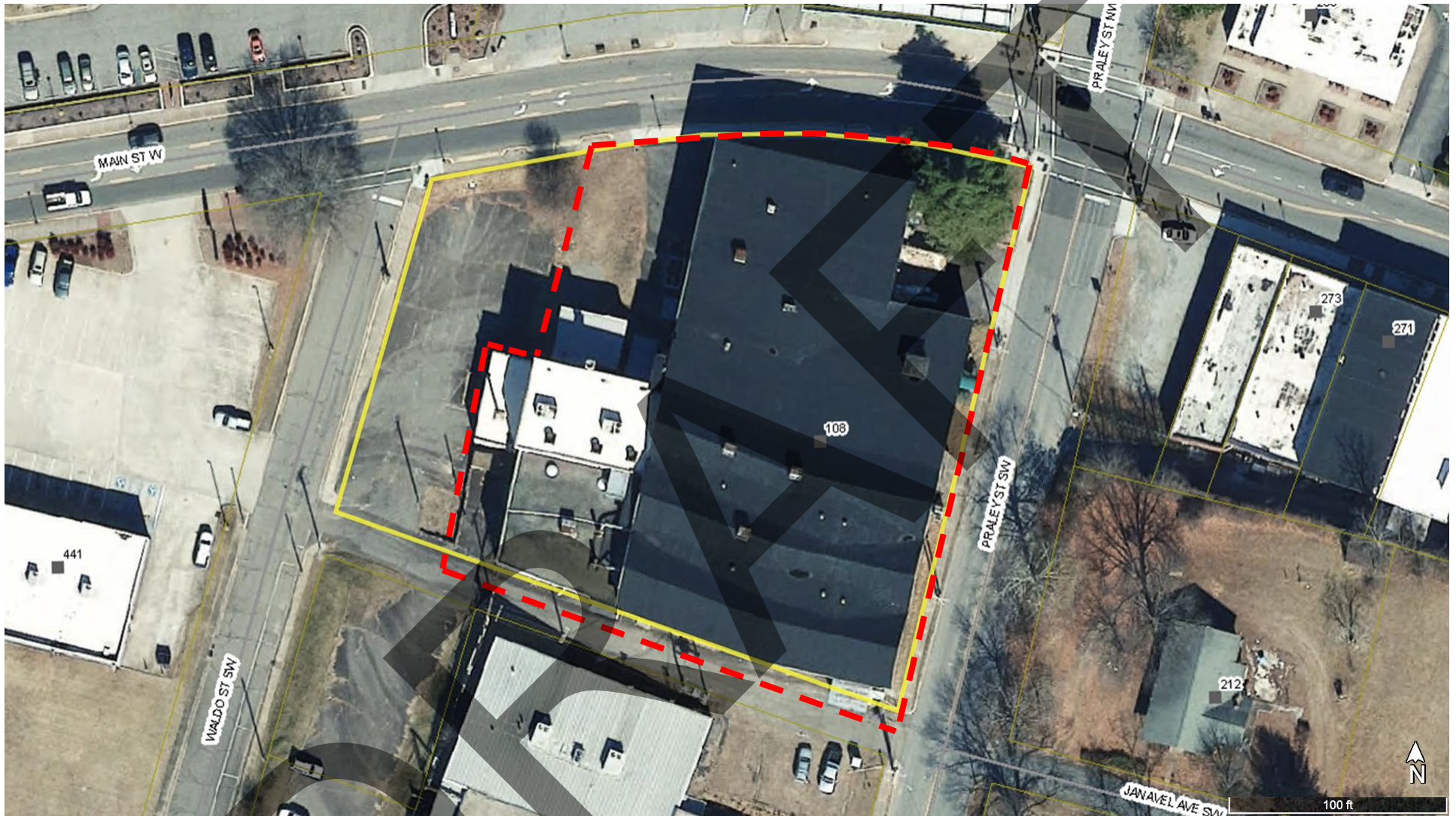
Base map source: Google Earth

Waldensian Swiss Embroidery Company – Valdese Weavers, Inc. Mill
108 Praley Street SW
Valdese, Burke County, North Carolina



NATIONAL REGISTER OF HISTORIC PLACES USGS MAP

Waldensian Swiss Embroidery Company – Valdese Weavers, Inc. Mill
108 Praley Street SW
Valdese, Burke County, North Carolina

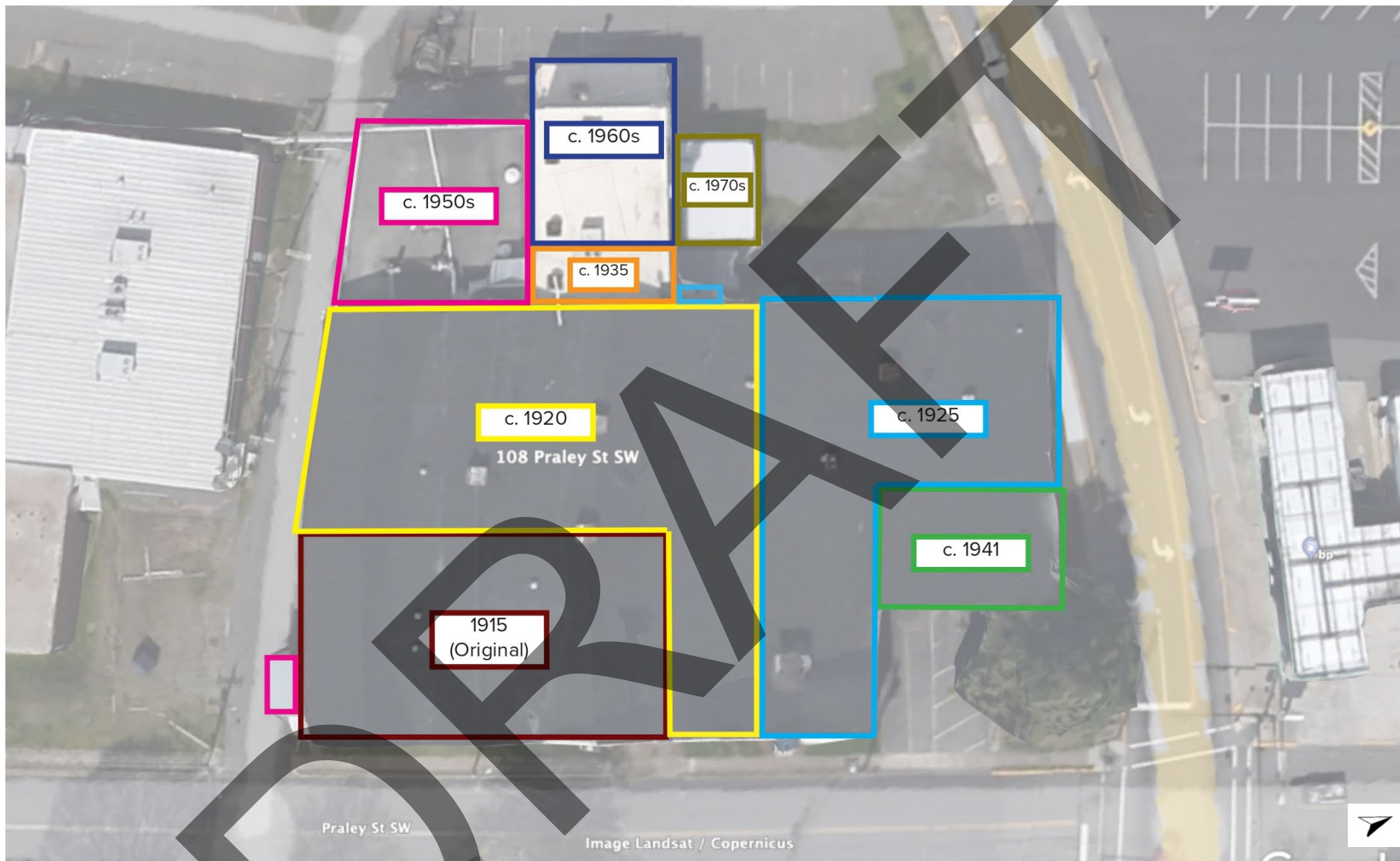


**NATIONAL REGISTER OF HISTORIC PLACES
BOUNDARY MAP**

Base map source: Burke County GIS

solid yellow line represents the current tax parcel boundary; dashed red line represents the National Register boundary

Waldensian Swiss Embroidery Company – Valdese Weavers, Inc. Mill
108 Praley Street SW
Valdese, Burke County, North Carolina



**NATIONAL REGISTER OF HISTORIC PLACES
BUILDING EVOLUTION MAP**

Base map source: Google Maps

